

# 5

## Great Valley Parkway, Suite 359

Malvern, PA 19355

3,225 SF Available for Lease

Office Space





# 5 Great Valley Parkway, Suite 359

Malvern, PA 19355

This property draws you in with its elegant 3-story atrium lobby. Located next door to the shops and living quarters at Atwater, this building is walkable to many amenities and just a short drive from additional restaurants, hotels, daycare facilities, tennis courts, Valley Creek Township Park, The Grove, Uptown Worthington, and the Chester Valley Trail.

Located in the Keystone Innovation Zone, this property includes easy access to the PA Turnpike, Routes 202, 30, & 401, and public transportation.

## Property Highlights

**Building Owner:** Workspace Property Trust

**Total Building Size:** 65,044 Square Feet

**Available Space:** 3,225 Square Feet

**Space Condition:** Plug & Play/Move-in Ready

**Outdoor Amenities:**

Paver Patio & Electric Car Charging



## 3,225 SF Available for Lease

Office Space

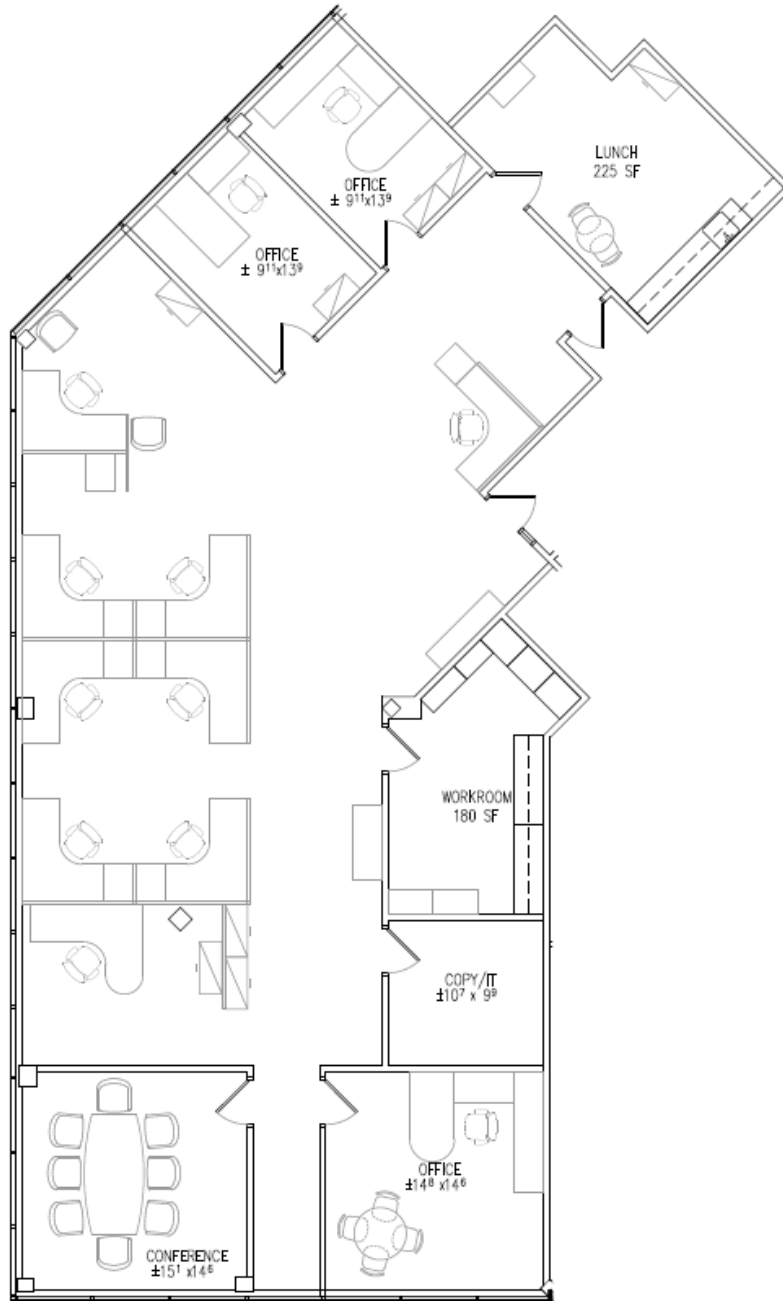
# 5 Great Valley Parkway, Suite 359

Malvern, PA 19355

**workspace**  
property trust

## 3,225 SF Available for Lease

Office Space



## Leasing Information

7 Great Valley Parkway, Suite 190, Malvern, PA, 19355  
215.802.4061  
[www.workspaceproperty.com](http://www.workspaceproperty.com)

Doug Himmelreich  
Director of Leasing  
[dhimmelreich@workspaceproperty.com](mailto:dhimmelreich@workspaceproperty.com)





## Spaces for the Way Work Happens Today.

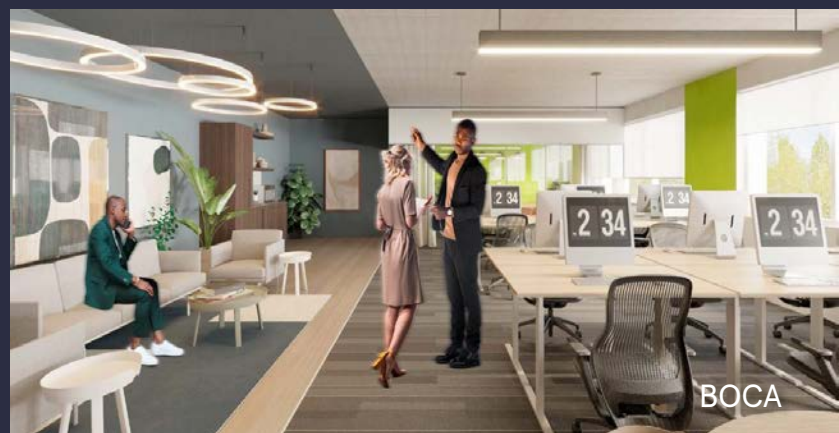
These beautifully designed themes inspire creativity and encourage productivity. Whether you are looking for 1,000 square feet or 100,000 square feet, our in-house design & development team can deliver a turnkey office solution.

### Tailored for the Evolution of Office:

- "A La Carte" or "On Demand" Furniture Packages Available
- Plug & Play IT Packages Available



**Scan here** to learn more about our premium theme selects.



\*Indicative of the look and feel (not the actual suite)