

1200

W Parkland Ave | Parkland Center

Milwaukee, WI 53224

workspace
property trust

39,291 SF Available for Lease

Office Space



11200 West Parkland Ave

Milwaukee, WI 53224

This Gold level, LEED certified property is ideal for a large user looking for a location with everything under one roof. Parkland Center presents with a newly renovated lobby and ground floor, an on-site fitness center complete with a proper exercise studio, on-site café with a self-pay micro market and indoor/outdoor seating.

Additional highlights include access to multiple retail centers, daycares, hotels, quick access to I-41, and Dretzka recreational park and golf course.

Plug-and-play opportunities are available, and the larger space can be divisible to 13,500 SF office space, or ground floor white box of 30,000 SF.

Property Highlights

Building Owner: Workspace Property Trust

Total Building Size: 222,704

Available Space: 9,291-30,000 Square Feet

Ceiling Height: 14'

Parking: 5.15/1,000 SF | 1,203 spaces



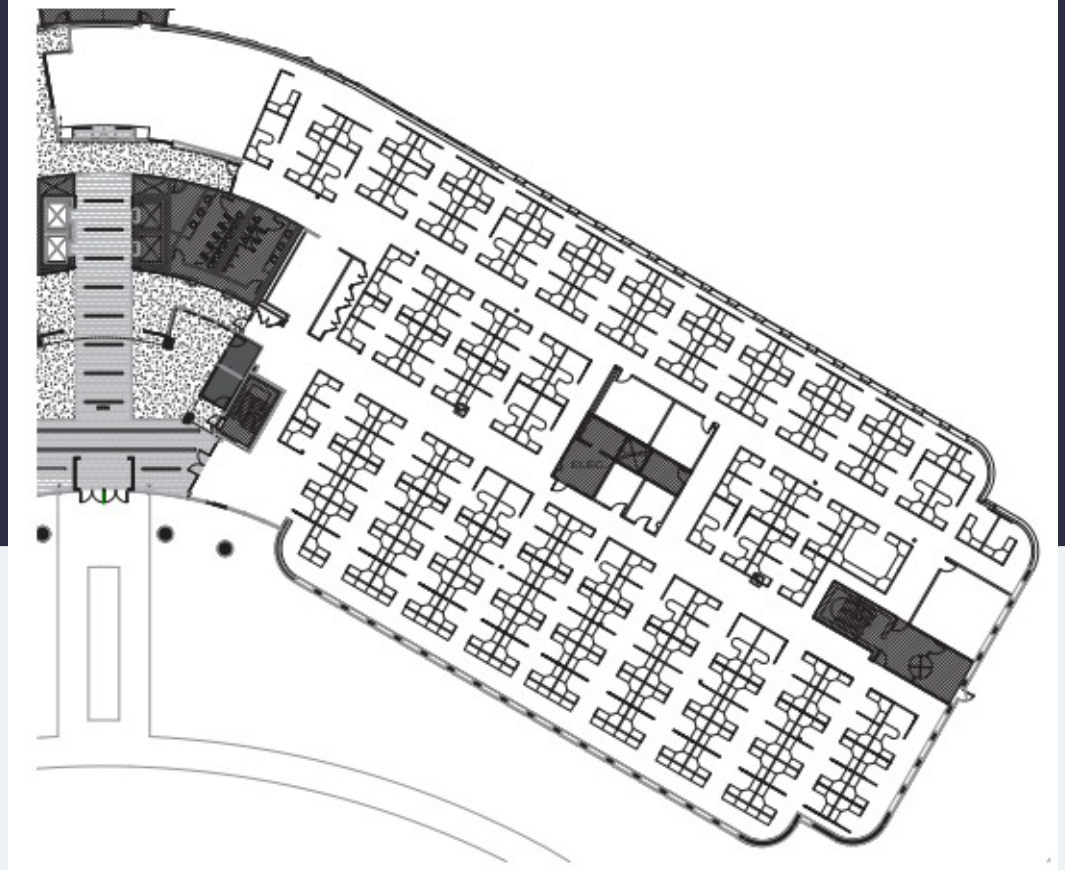
39,291 SF Available for Lease

11200 West Parkland Ave | Parkland Center

Milwaukee, WI 53224



9,291 SF Available
Ground Floor Suite
with furniture



Leasing Information

Wes Rudes
Director of Leasing
470.270.1275 | wrudes@workspaceproperty.com

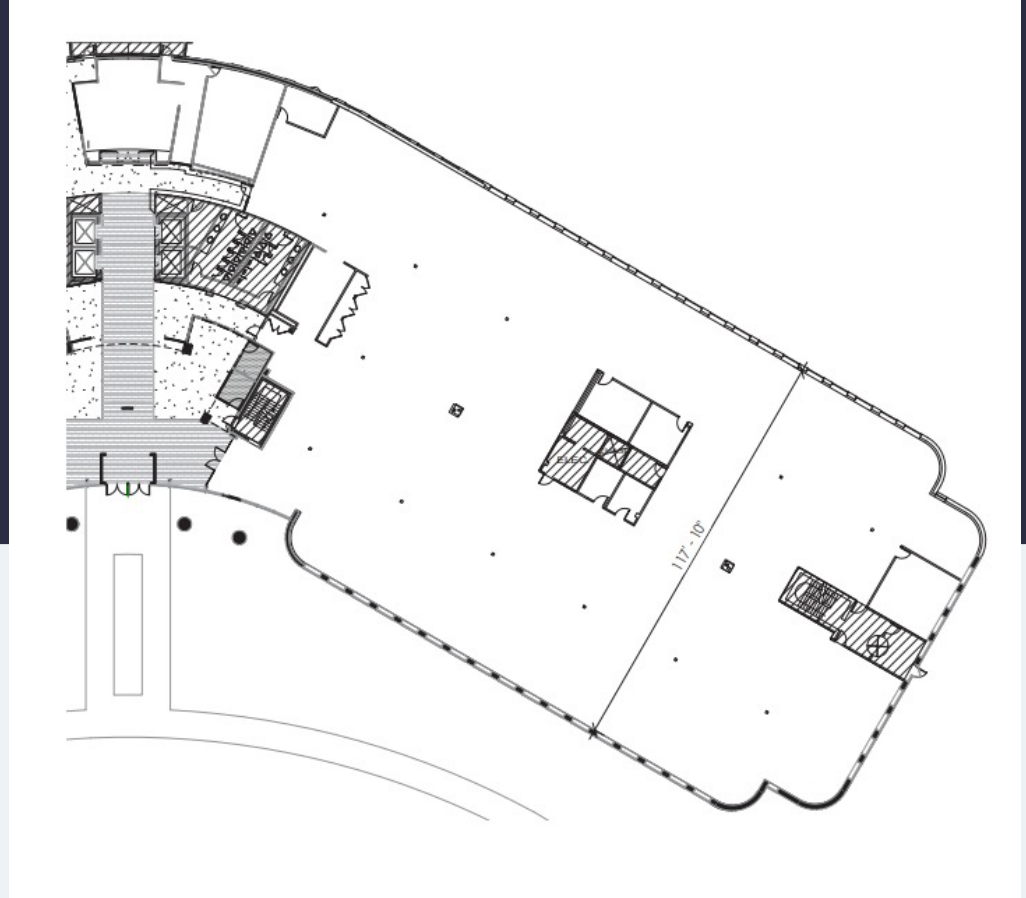
workspace
property trust

11200 West Parkland Ave | Parkland Center

Milwaukee, WI 53224



30,000 SF Available
white box space



Leasing Information

Wes Rudes
Director of Leasing
470.270.1275 | wrudes@workspaceproperty.com

workspace
property trust