

2 Walnut Grove Drive | Suite 180

Horsham, PA 19044

workspace
property trust

6,341 SF Available Now

Office Space



2 Walnut Grove Drive | Suite 180

Horsham, Pennsylvania, 19044

PROPERTY HIGHLIGHTS

AMENITIES

2 Walnut Grove Dr, a prestigious three-story office building ideally situated in the heart of Horsham, PA. Step into the sunlit atrium lobby, meticulously renovated in 2020 to feature contemporary collaborative furniture, fostering a welcoming and modern atmosphere that enhances every workday.

Tenants enjoy the proximity to countless lifestyle centers, the walkability to restaurants, and numerous on-site amenities throughout our campus such as:

- On-site Beer Garden at 100 Lakeside
- On-site EV charging stations throughout campus
- On-site Fitness Center at 100 Lakeside
- Synergy at 100 Lakeside Conference Center
- Fully equipped conference facility at 200 Gibraltar
- Access to (5) daycares minutes from the office
- 555 Flats Luxury Living under 1 mile away
- Shopping at the Upper Dublin Promenade under 2 miles away

Building Owner: Workspace Property Trust

Total Building Size: 81,856

Ceiling Height: 8'4"

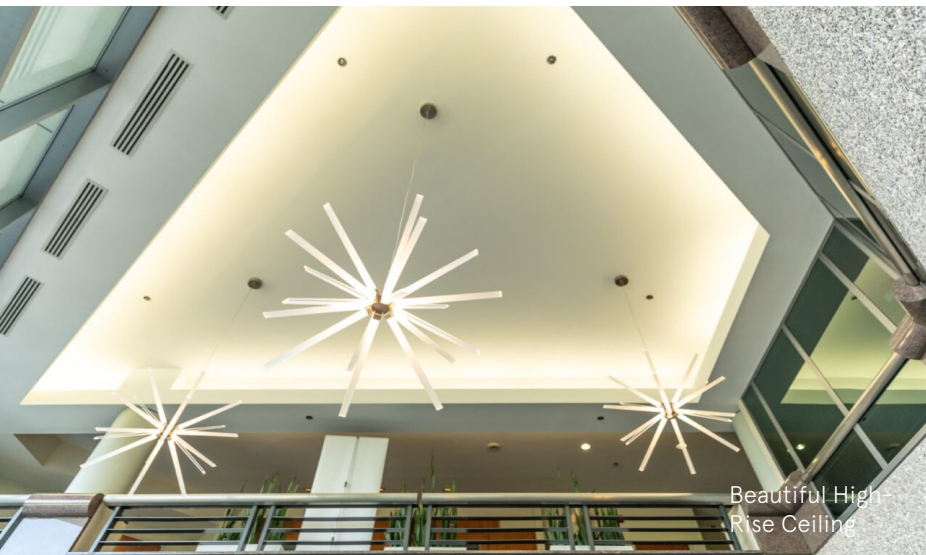
6,341 SF Available Now

Office Space





Updated Lobby



Beautiful High-Rise Ceiling



Updated Lobby

6,341 SF Available Now

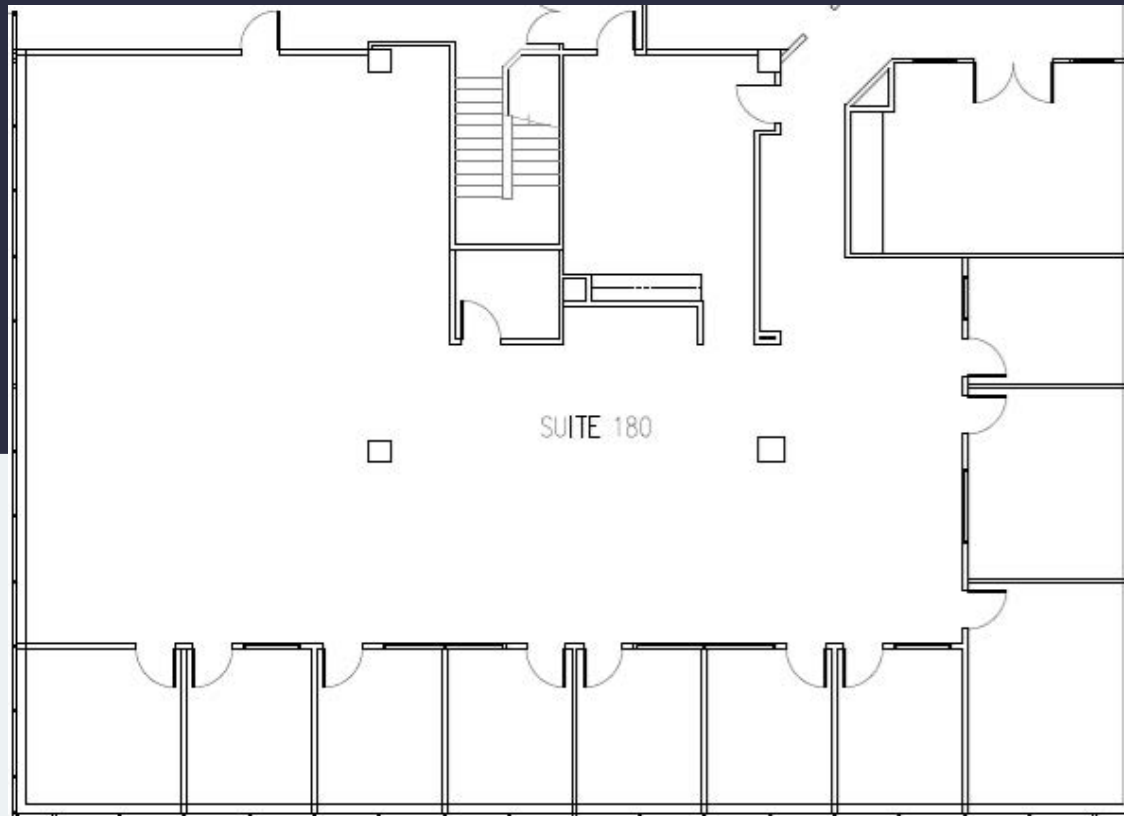
2 Walnut Grove Drive | Suite 180

2 Walnut Grove Drive I Suite 180

Horsham, Pennsylvania 19044



6,341 SF Available for Lease



Leasing Information

700 Dresher Road, Suite 150
(215) 328-2732
www.workspaceproperty.com

Doug, Himmelreich
Director of Leasing
dhimmelreich@workspaceproperty.com



Spaces for the Way Work Happens Today.

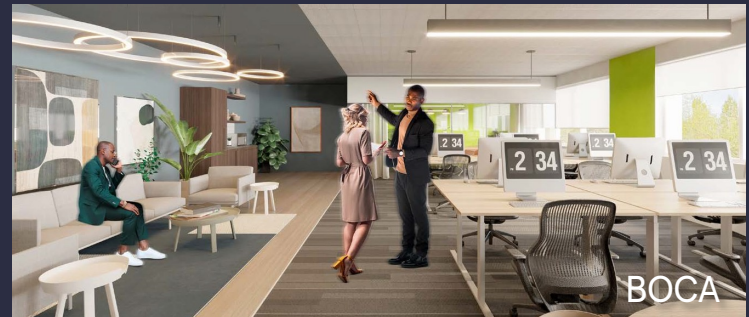
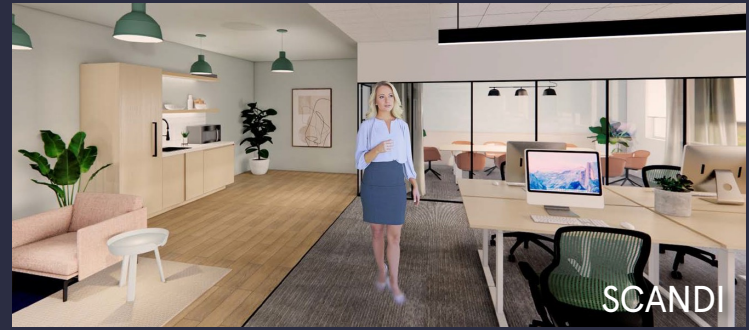
These beautifully designed themes inspire creativity and encourage productivity. Whether you are looking for 1,000 square feet or 100,000 square feet, our in-house design & development team can deliver a turnkey office solution.

Tailored for the Evolution of Office:

- "A La Carte" or "On Demand" Furniture Packages Available
- Plug & Play IT Packages Available



Scan here to learn more about our premium theme selects.



*Indicative of the look and feel (not the actual suite)