

Huntington Square III

3350 SW 148<sup>th</sup> Avenue Suite 140

Miramar, FL 33027

workspace  
property trust

1,958 SF Available Now

Asking Rent: \$25.00/NNN

2025 OPEX: \$14.63/RSF





# 3350 SW 148<sup>TH</sup> Avenue Suite 140

Miramar, Florida 33027

## PROPERTY HIGHLIGHTS

### AMENITIES

Class “A” office campus in prestigious “Huntington Business Park” located with immediate access to I-75. On-site management, café and security, outdoor tenant lounge with covered seating areas, updated conference facility, free Wi-Fi in lobby, and 4.5/1,000 SF parking ratio. Proximity to shopping centers, hotels, restaurants, banks, daycare and fitness centers.

### TRANSPORTATION

Interstate 75 frontage with easy access to all major highways

### TECHNOLOGY

Clear Wireless, Comcast

### SUSTAINABILITY

Energy Star labeled building. Green initiatives in place by tenants and property management to include janitorial and recycling.

**Building Owner:** Workspace Property Trust

**Total Building Size:** 154,765 SF



Conference Room



Aerial View

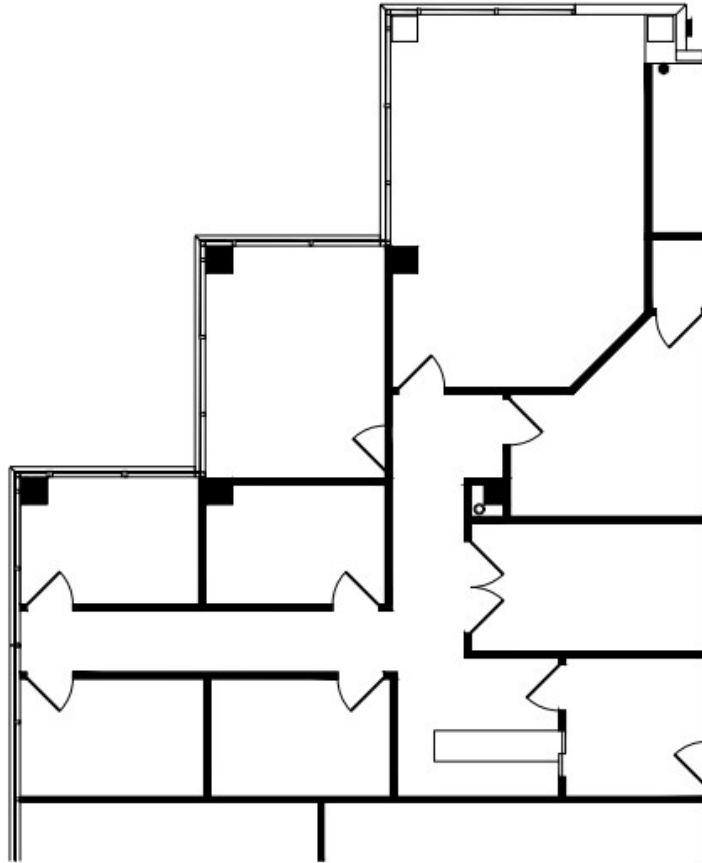
1,958 SF Available Now

# 3350 SW 148<sup>th</sup> Avenue Suite 140

Miramar, Florida 33027



## 1,958 SF Available Now



## Leasing Information

777 Yamato Road, Suite 105, Boca Raton, FL, 33431  
(954) 391-5503  
[www.workspaceproperty.com](http://www.workspaceproperty.com)

Mike Nathanson  
*Director of Leasing*  
[mnathanson@workspaceproperty.com](mailto:mnathanson@workspaceproperty.com)





Lobby/Atrium



Side Entrance



Main Entrance



Lobby/Atrium



Rear Building



# Spaces for the Way Work Happens Today.

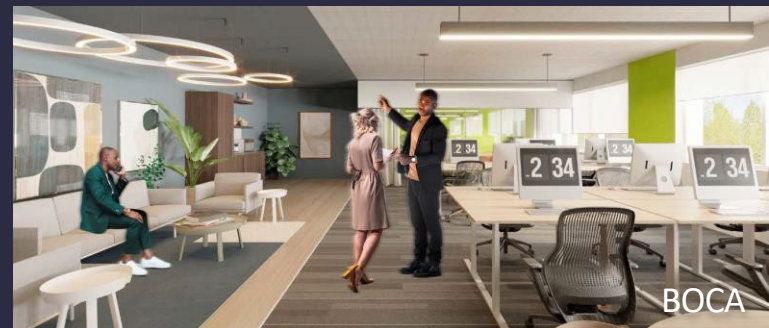
These beautifully designed themes inspire creativity and encourage productivity. Whether you are looking for 1,000 square feet or 100,000 square feet, our in-house design & development team can deliver a turnkey office solution.

## Tailored for the Evolution of Office:

- “A La Carte” or “On Demand” Furniture Packages Available
- Plug & Play IT Packages Available



Scan here to learn more about our premium theme selects.



\*Indicative of the look and feel (not the actual suite)