

220 Gibraltar Road | Suite 100

Horsham, PA 19044

workspace
property trust

9,322 SF Available for Lease

Office Space



220 Gibraltar Road I Suite 100

Horsham, Pennsylvania, 19044

PROPERTY HIGHLIGHTS

AMENITIES

220 Gibraltar Road, a prominent multi-tenant office building situated in the highly sought-after Pennsylvania Lifestyle Campus. Enjoy a harmonious blend of convenience and quality, featuring top-tier amenities including an on-site fitness center designed to enhance your professional setting. Discover the distinctive advantages of working at 220 Gibraltar Road, where practicality meets comfort in a vibrant campus environment.

Demographics >>

	1 mile	3 miles
Population	11,879	88,048
Households	5,252	34,323
Median Age	38.70	41.80
Median HH Income	\$70,360	\$98,780
Daytime Employees	13,081	51,580
Population Growth '24 - '29	▲ 1.52%	▲ 1.57%
Household Growth '24 - '29	▲ 1.56%	▲ 1.67%

9,322 SF Available for Lease Office Space



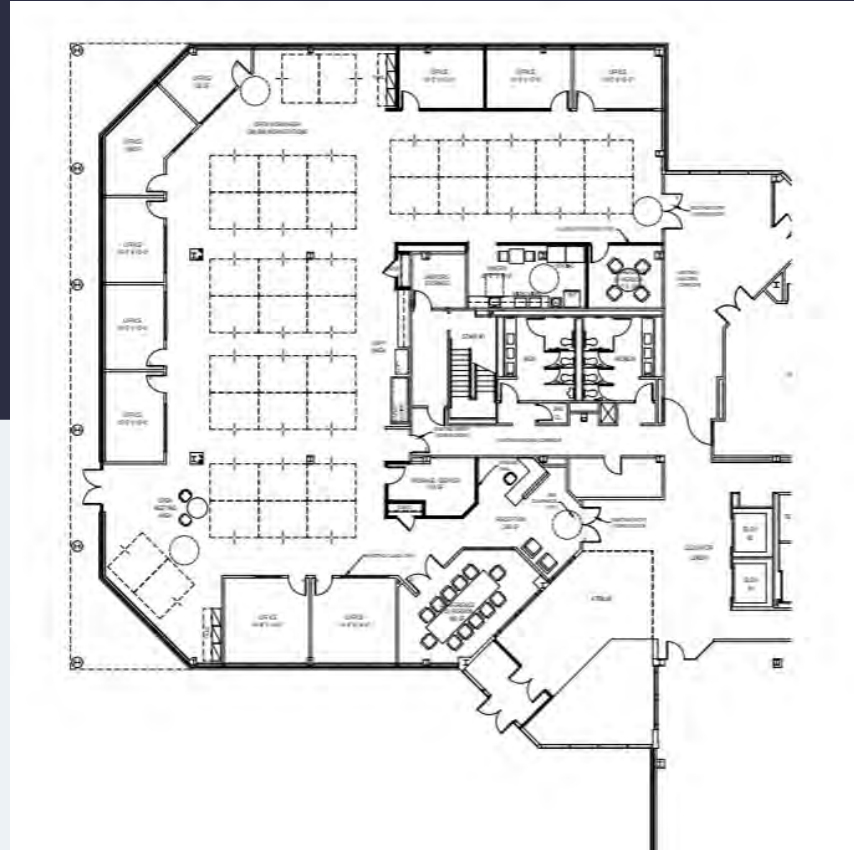
220 Gibraltar Road I Suite 100

Horsham, Pennsylvania 19044



9,322 SF Available for Lease

Office Space



Leasing Information

700 Dresher Road, Suite 150
(215) 328-2732
www.workspaceproperty.com

Doug Himmelreich
Director of Leasing
Dhimmelreich@workspaceproperty.com



Spaces for the Way Work Happens Today.

These beautifully designed themes inspire creativity and encourage productivity. Whether you are looking for 1,000 square feet or 100,000 square feet, our in-house design & development team can deliver a turnkey office solution.

Tailored for the Evolution of Office:

- "A La Carte" or "On Demand" Furniture Packages Available
- Plug & Play IT Packages Available



Scan here to learn more about our premium theme selects.



*Indicative of the look and feel (not the actual suite)