

# 220 Gibraltar Road | Suite 200

Horsham, PA 19044

**workspace**  
property trust

## 14,874 SF Available for Lease

Office Space





# 220 Gibraltar Road | Suite 200

Horsham, Pennsylvania, 19044

## PROPERTY HIGHLIGHTS

### AMENITIES

220 Gibraltar Road, a prominent multi-tenant office building situated in the highly sought-after Pennsylvania Lifestyle Campus. Enjoy a harmonious blend of convenience and quality, featuring top-tier amenities including an on-site fitness center designed to enhance your professional setting. Discover the distinctive advantages of working at 220 Gibraltar Road, where practicality meets comfort in a vibrant campus environment.

### Demographics >>

	1 mile	3 miles
Population	11,879	88,048
Households	5,252	34,323
Median Age	38.70	41.80
Median HH Income	\$70,360	\$98,780
Daytime Employees	13,081	51,580
Population Growth '24 - '29	▲ 1.52%	▲ 1.57%
Household Growth '24 - '29	▲ 1.56%	▲ 1.67%

14,874 SF Available for Lease Office Space



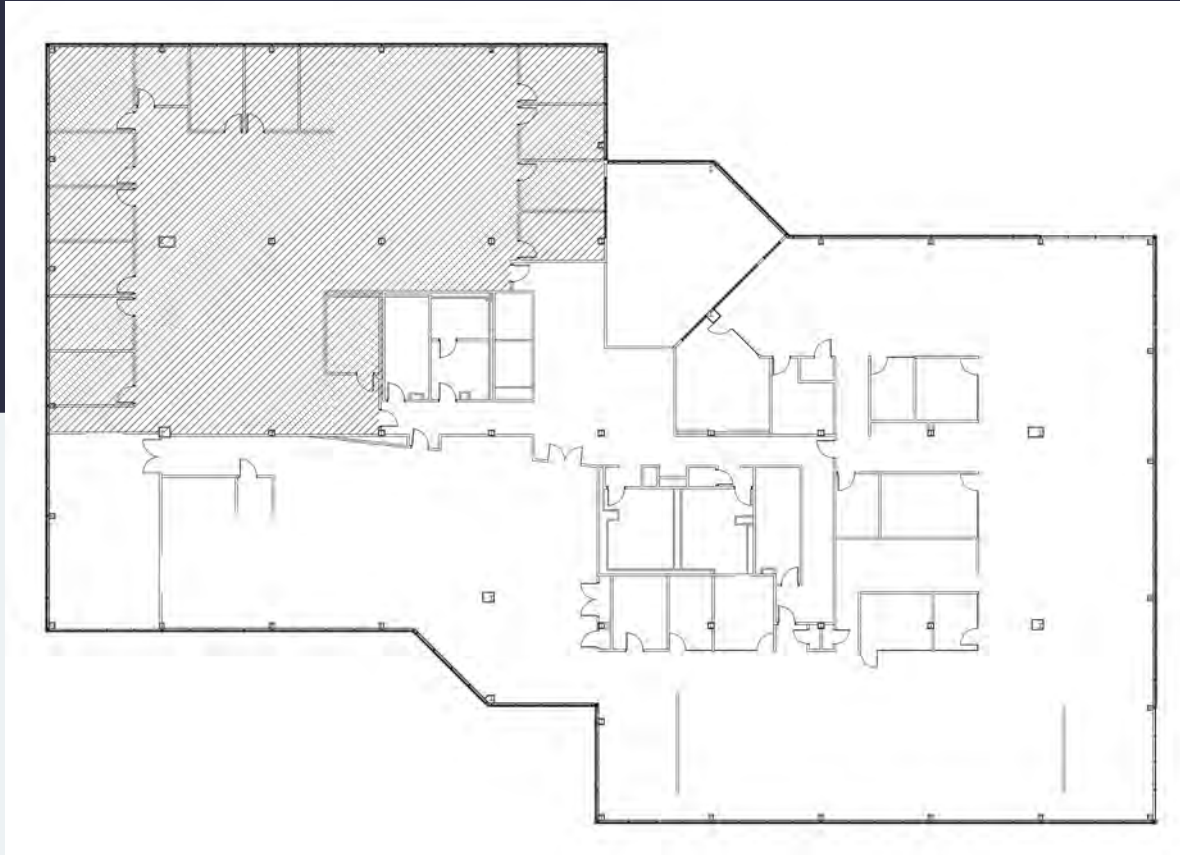
# 220 Gibraltar Road I Suite 200

Horsham, Pennsylvania 19044



## 14,874 SF Available for Lease

Office Space



## Leasing Information

700 Dresher Road, Suite 150  
(215) 328-2732  
[www.workspaceproperty.com](http://www.workspaceproperty.com)

Doug Himmelreich  
Director of Leasing  
[Dhimmelreich@workspaceproperty.com](mailto:Dhimmelreich@workspaceproperty.com)





# Spaces for the Way Work Happens Today.

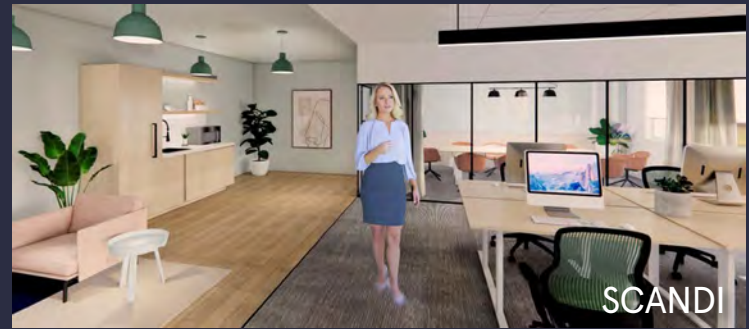
These beautifully designed themes inspire creativity and encourage productivity. Whether you are looking for 1,000 square feet or 100,000 square feet, our in-house design & development team can deliver a turnkey office solution.

## Tailored for the Evolution of Office:

- "A La Carte" or "On Demand" Furniture Packages Available
- Plug & Play IT Packages Available



**Scan here** to learn more about our premium theme selects.



\*Indicative of the look and feel (not the actual suite)