

0510

# Liberty Ridge Drive, Suite 3000

Wayne, PA 19087

workspace  
property trust

## 20,806 Available for Lease

Office Space





# 1500, 1550 Liberty Ridge Drive, Suite 3000

Wayne, PA 19087

This property provides gorgeous views of Valley Forge Mountain with generous amounts of outdoor seating. On the first floor, you'll find a brand-new conferencing center and a micro market for grab-and-go convenience. Follow the walking trail up to 1400 Liberty Ridge Drive where the 24/7 access fitness center with free weights, cardio, resistance machines, an exercise room, and spacious locker rooms can be found on the ground floor. Executive-level garage parking is available below the building. The trail system around the building will take you to Wilson Farm Park and Valley Forge National Park. Located in the Keystone Innovation Zone, this property includes easy access to Routes 202, 252, 422, 76, and public transportation.

## Property Highlights

**Building Owner:** Workspace Property Trust

**Total Building Size:** 208,974 Square Feet

**Ceiling Height:** 9' Throughout

**Amenities:** 24/7 Fitness Center Next Door, Conferencing Center and Micro Market on 1<sup>st</sup> Floor, Executive Parking Under Building



## 20,806 SF Available for Lease

Office Space

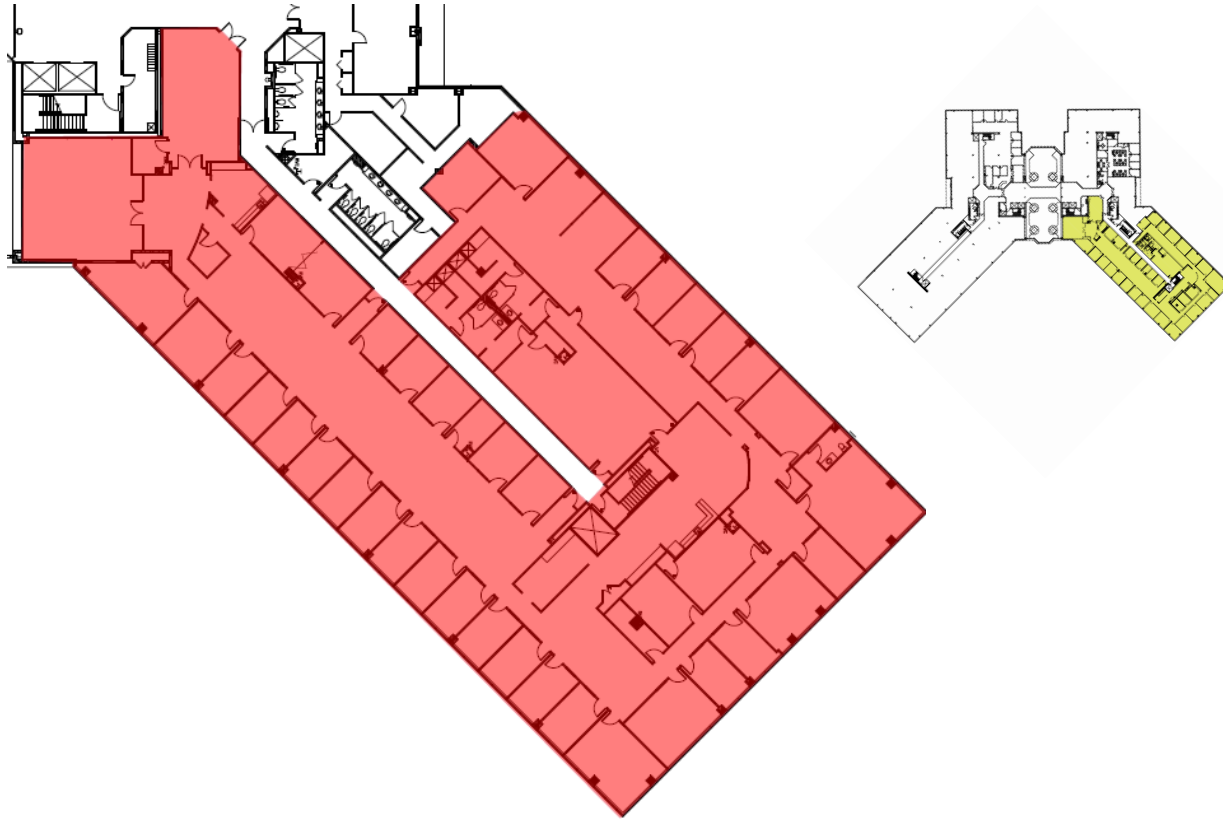
# 1500, 1550 Liberty Ridge Drive, Suite 3000

Wayne, PA 19087



## 20,806 SF Available for Lease

Office Space



## Leasing Information

7 Great Valley Parkway, Suite 190, Malvern, PA, 19355  
(484) 320-3708  
[www.workspaceproperty.com](http://www.workspaceproperty.com)

Doug Himmelreich  
Director of Leasing  
[dhimmelreich@workspaceproperty.com](mailto:dhimmelreich@workspaceproperty.com)





# Spaces for the Way Work Happens Today.

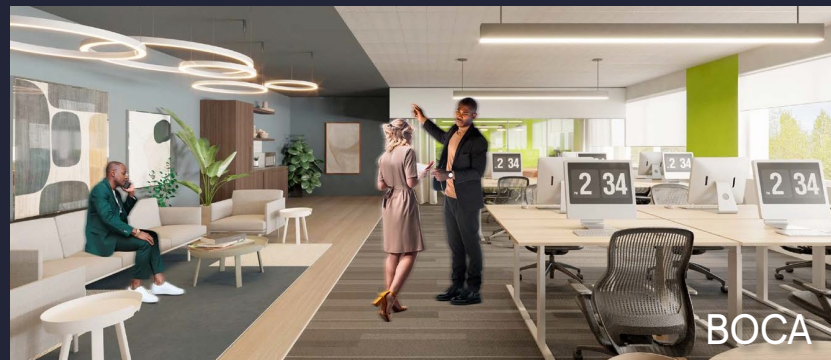
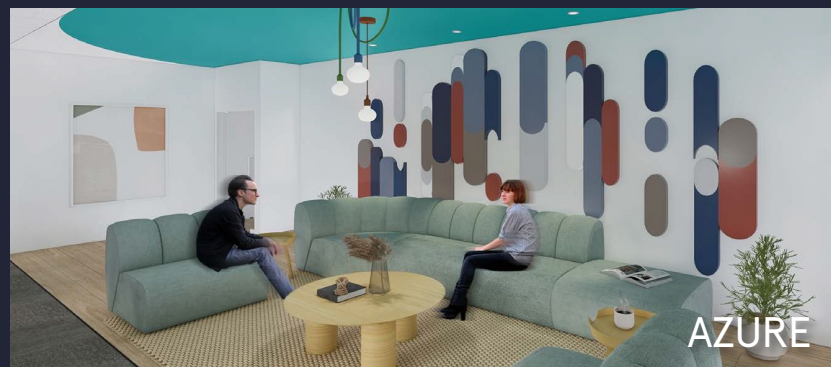
These beautifully designed themes inspire creativity and encourage productivity. Whether you are looking for 1,000 square feet or 100,000 square feet, our in-house design & development team can deliver a turnkey office solution.

## Tailored for the Evolution of Office:

- "A La Carte" or "On Demand" Furniture Packages Available
- Plug & Play IT Packages Available



**Scan here** to learn more about our premium theme selects.



\*Indicative of the look and feel (not the actual suite)