

081

# Sheree Boulevard, Suite 3900

Exton, PA 19341

workspace  
property trust

## 15,210 SF Available for Lease

Office Space





# 180 Sheree Boulevard, Suite 3900

Exton, PA 19341

This property includes amenities such as nearby shopping, restaurants, hotels, daycare facilities and Marsh Creek State Park.

It's located in the Keystone Innovation Zone and includes easy access to the PA Turnpike and Routes 100, 113, & 401.

Direct access to each suite also provides the opportunity for private outdoor collaboration areas and on-grade loading.

## Property Highlights

**Building Owner:** Workspace Property Trust

**Total Building Size:** 40,429 Square Feet

**Available Space:** 15,210 Square Feet

**Ceiling Height:** 8.5' Throughout

**Features:** Direct Entrances & Individualized HVAC



## 15,210 SF Available for Lease

Office Space

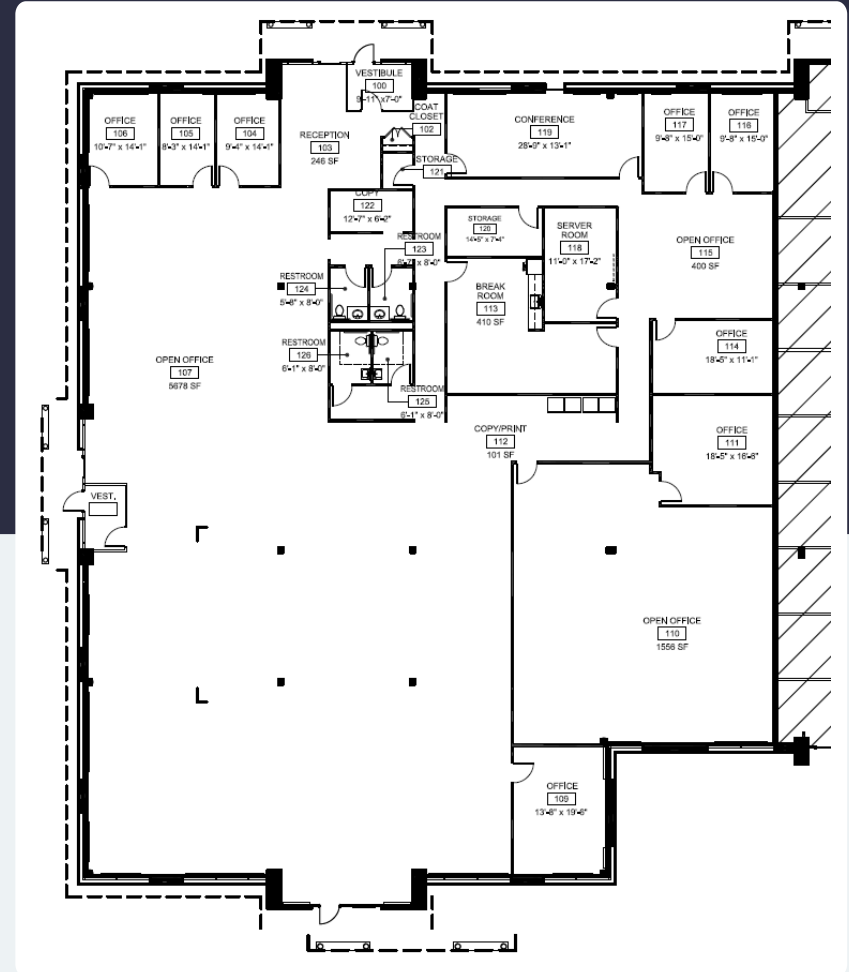
# 180 Sheree Boulevard, Suite 3900

Exton, PA 19341

**workspace**  
property trust

## 15,210 SF Available for Lease

Office Space





# Spaces for the Way Work Happens Today.

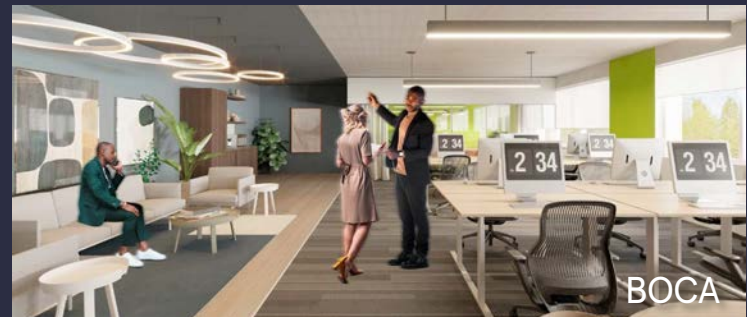
These beautifully designed themes inspire creativity and encourage productivity. Whether you are looking for 1,000 square feet or 100,000 square feet, our in-house design & development team can deliver a turnkey office solution.

## Tailored for the Evolution of Office:

- "A La Carte" or "On Demand" Furniture Packages Available
- Plug & Play IT Packages Available



**Scan here** to learn more about our premium theme selects.



\*Indicative of the look and feel (not the actual suite)