

3427-

Great Valley Parkway, Suite 100

Malvern, PA 19355

60,623 SF Available for Lease

Industrial / R&D / Flex (IRDF) Space



27-43 Great Valley Parkway, Suite 100

Malvern, PA 19355

Situated in Malvern's prestigious Great Valley Corporate Center, 27-43 Great Valley Parkway offers tenants an ideal blend of convenience and lifestyle amenities, designed to enhance productivity and work-life balance. The campus provides effortless access to a variety of nearby attractions, including Valley Creek Township Park, The Grove, Uptown Worthington, and the scenic Chester Valley Trail. Tenants are just moments away from top-tier restaurants, hotels, daycare facilities, tennis courts, and luxury apartment communities.

Positioned within the Keystone Innovation Zone, this property boasts excellent connectivity, with swift access to the PA Turnpike, Routes 202, 30, and 401, as well as reliable public transportation options.

Property Highlights

Building Owner: Workspace Property Trust

Available Space: 60,623 Square Feet

Ceiling Height: 18' floor to deck

Amenities:

- Located near numerous Day Cares
- 3 Dock Doors
- 1,200 Amps | 120/308 Volts
- Parking: 3.1/1,000
- Minutes away from "The Grove"
 - Local Shopping Center



60,623 SF Available for Lease

Industrial / R&D / Flex (IRDF) Space

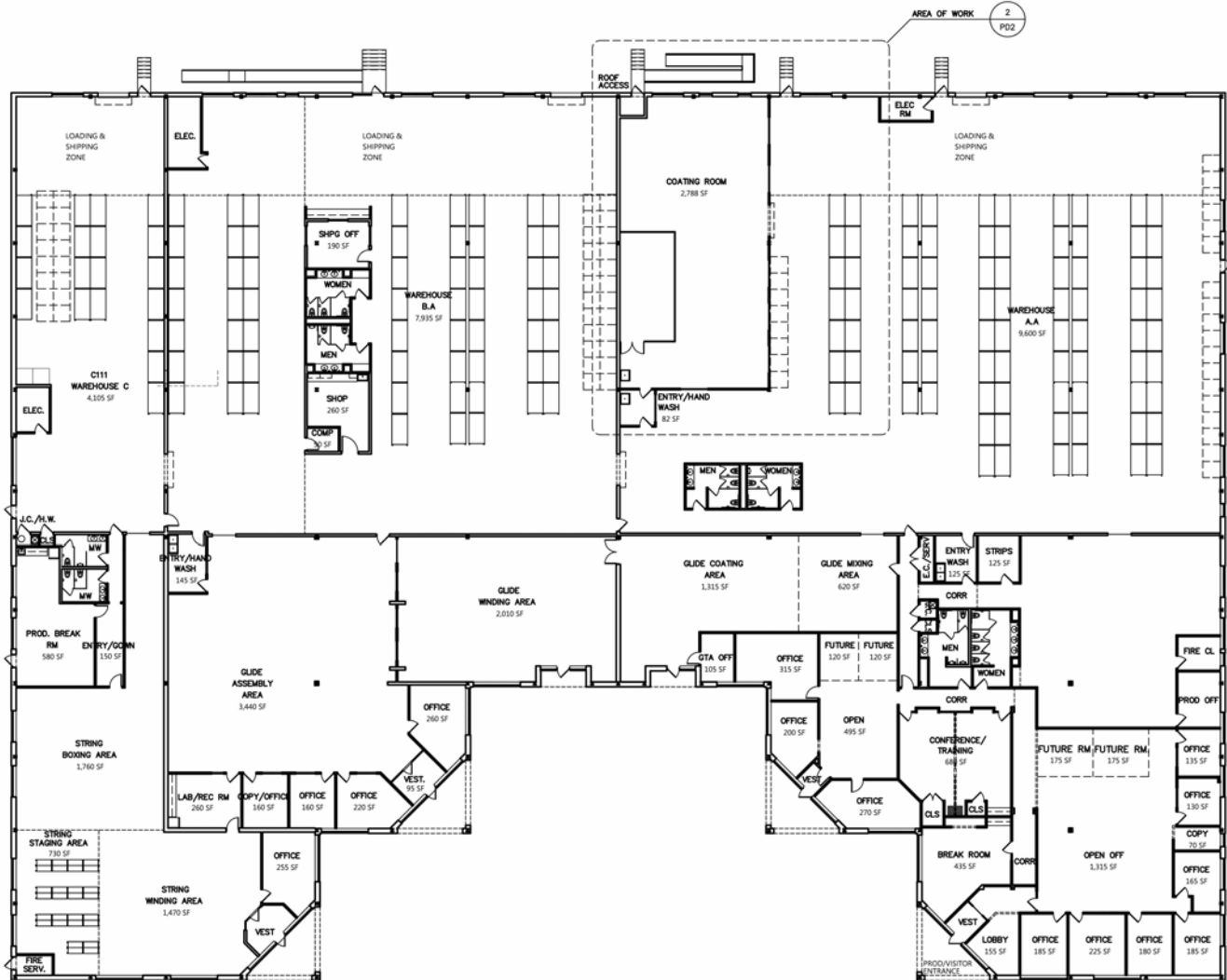
27-43 Great Valley Parkway, Suite 100

Malvern, PA 19355

workspace
property trust

60,623 SF Available for Lease

Industrial / R&D / Flex (IRDF) Space



Leasing Information

7 Great Valley Parkway, Suite 190, Malvern, PA, 19355
215.802.4061
www.workspaceproperty.com

Doug Himmelreich
Director of Leasing
dhimmelreich@workspaceproperty.com



Spaces for the Way Work Happens Today.

These beautifully designed themes inspire creativity and encourage productivity. Whether you are looking for 1,000 square feet or 100,000 square feet, our in-house design & development team can deliver a turnkey office solution.

Tailored for the Evolution of Office:

- "A La Carte" or "On Demand" Furniture Packages Available
- Plug & Play IT Packages Available



Scan here to learn more about our premium theme selects.



*Indicative of the look and feel (not the actual suite)