

# Huntington Square II

3450 Lakeside Drive Suite 350

Miramar, Florida 33027

**workspace**  
property trust

2,900 SF – Available 3.1.26

Asking Rent: \$21.00/NNN  
2026 OPEX: \$15.45 RSF





# 3450 Lakeside Drive Suite 350

Miramar, Florida 33027

## PROPERTY HIGHLIGHTS

### AMENITIES

Class "A" office campus in prestigious "Huntington Business Park" located with immediate access to I-75. On-site management, newly renovated café and security, outdoor tenant lounge with covered seating areas, updated conference facility, free Wi-Fi in lobby, and 5.5/1,000 SF parking ratio. Proximity to shopping centers, hotels, restaurants, banks, daycare and fitness centers.

### TRANSPORTATION

Interstate 75 frontage with easy access to all major highways

### TECHNOLOGY

FPL Fibernet, AT&T, Verizon, Comcast

### SUSTAINABILITY

Energy Star labeled building. Green initiatives in place by tenants and property management to include janitorial and recycling.

**Building Owner: Workspace Property Trust**

**Total Building Size: 119,598 SF**

**2,900 SF Available 3.1.26**



Lobby Area



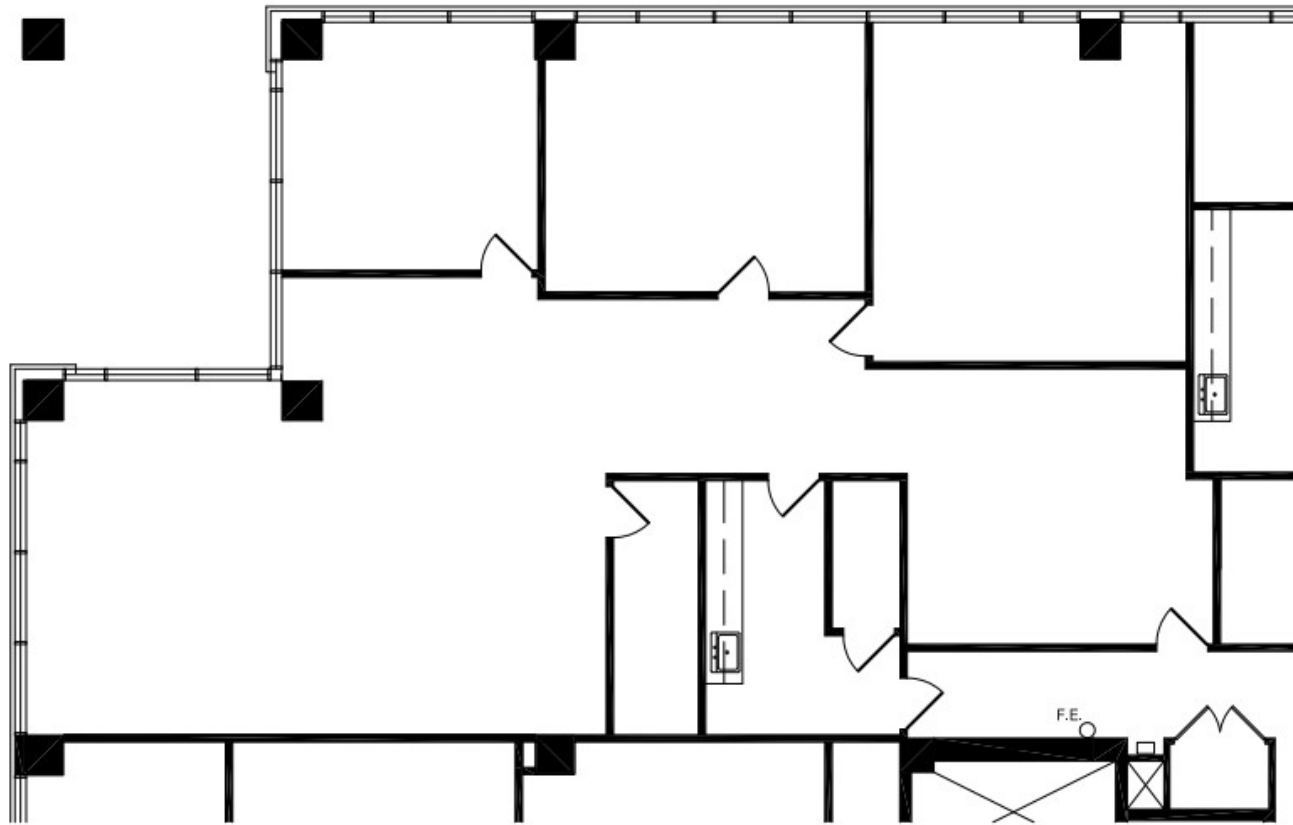
Lobby Elevators

# 3450 Lakeside Drive Suite 350

Miramar, Florida 33027



2,900 SF – Available 3.1.26



## Leasing Information

777 Yamato Road, Suite 105, Boca Raton, FL, 33431  
(954) 391-5503  
[www.workspaceproperty.com](http://www.workspaceproperty.com)

Mike, Nathanson  
Director of Leasing  
[mnathanson@workspaceproperty.com](mailto:mnathanson@workspaceproperty.com)



# Spaces for the Way Work Happens Today.

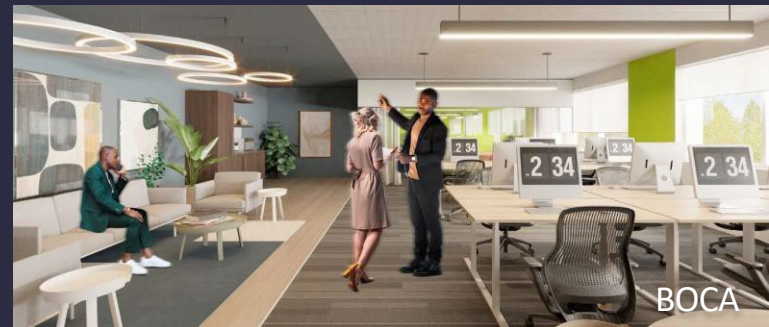
These beautifully designed themes inspire creativity and encourage productivity. Whether you are looking for 1,000 square feet or 100,000 square feet, our in-house design & development team can deliver a turnkey office solution.

## Tailored for the Evolution of Office:

- "A La Carte" or "On Demand" Furniture Packages Available
- Plug & Play IT Packages Available



Scan [here](#) to learn more about our premium theme selects.



\*Indicative of the look and feel (not the actual suite)