



Perimeter Center East

Atlanta, GA 30346



200,210 Available for Lease | 22,000 SF Floor Plates

Office Space



Looking for Something Else?

Explore other Workspace properties in Atlanta at [WorkspaceAtlanta.com](https://www.WorkspaceAtlanta.com).

66 Perimeter Center East

Atlanta, GA 30346

PROPERTY HIGHLIGHTS

- Full-service cafeteria
- MARTA 1.7 miles from office
- Two 2-Megawatt generators available for tenant use
- Access from I-285 and GA 400
- Minutes from retail and restaurants
- 24-hour building access + security
- Ample parking with covered parking deck
- Highlight efficient 22,000 SF floor plates

FIND YOUR SPACE WITH WORKSPACE

Workspace Property Trust is a leading, privately held, full-service commercial real estate company that provides multifaceted office solutions for today's modern companies. We own, lease, and manage an extensive portfolio of over 18 million square feet across more than 200 properties in thriving submarkets nationwide.



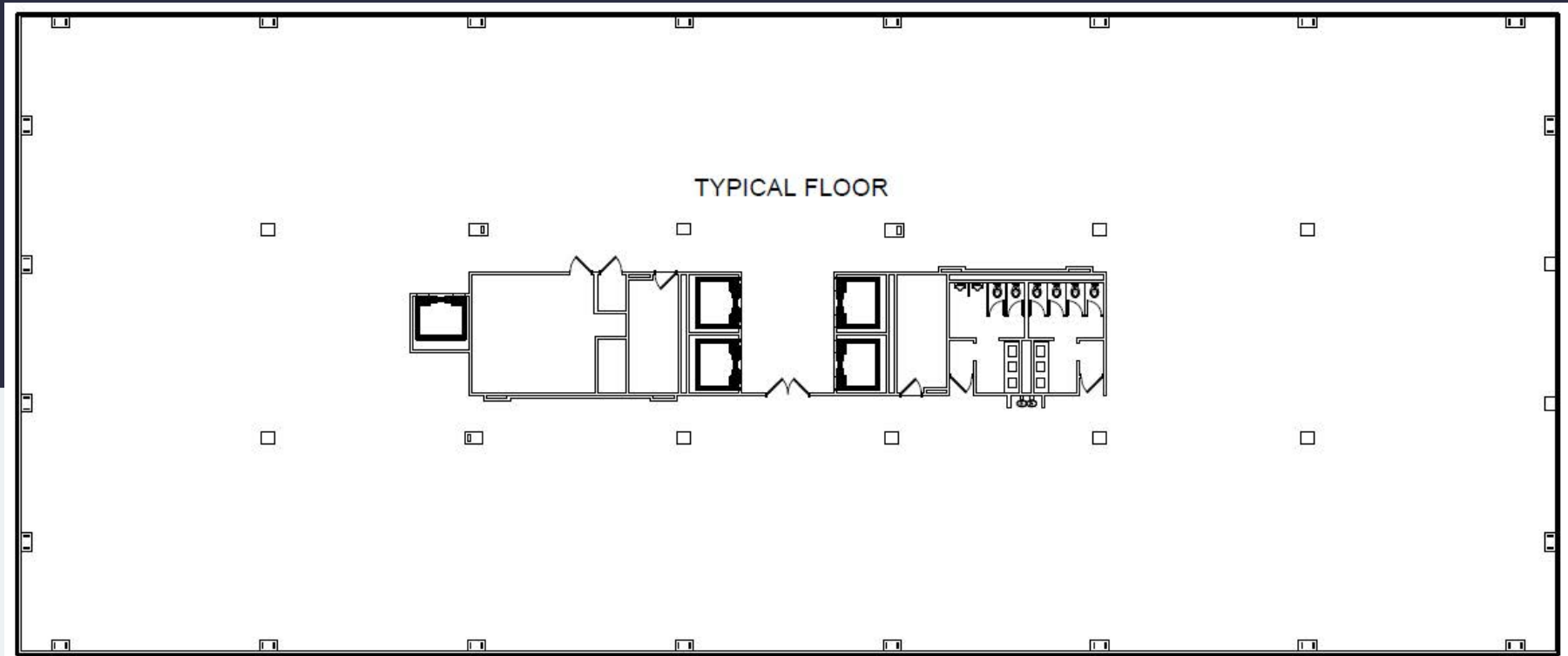
200,210 SF Available for Lease

66 Perimeter Center East | Typical Floor Plan

Atlanta, GA 30346

workspace
property management

22,000 SF Available for Lease



Leasing Information

Tony Nichols

Senior Vice President, Leasing

267.716.5438 | tnichols@workspaceproperty.com

Looking for Something Else?

Explore other Workspace properties
in Atlanta at [WorkspaceAtlanta.com](https://www.workspaceatlanta.com).