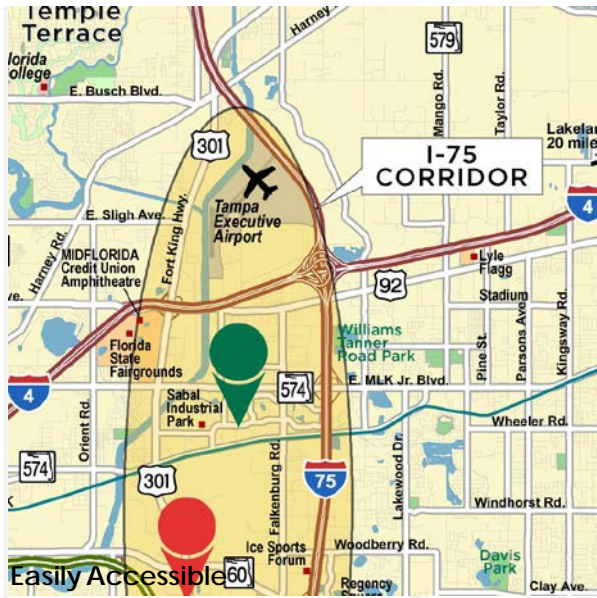


Find Your Space.

3104 Cherry Palm Drive
Suite 250 Tampa, FL 33619

2,072 SQ. FT. | \$14.00/NNN

4-5/1,000 Parking Ratio
Available for Lease



Property Highlights



PARK AMENITIES

Abundant parking. Generous landscaping with mature trees. On-site deli, close proximity to hotels, restaurants, and retail shops..



TRANSPORTATION

Hart stop at Falkenburg Rd and Broadway Ave. In the heart of the I-75 Corridor with quick access to US Hwy 301, S, I-4, and the Selmon Expressway



TECHNOLOGY

Spectrum and Fiber Net.



SUSTAINABILITY

Recycling receptacles on-site.



WORKSPACE PROPERTY TRUST (WSPT®)

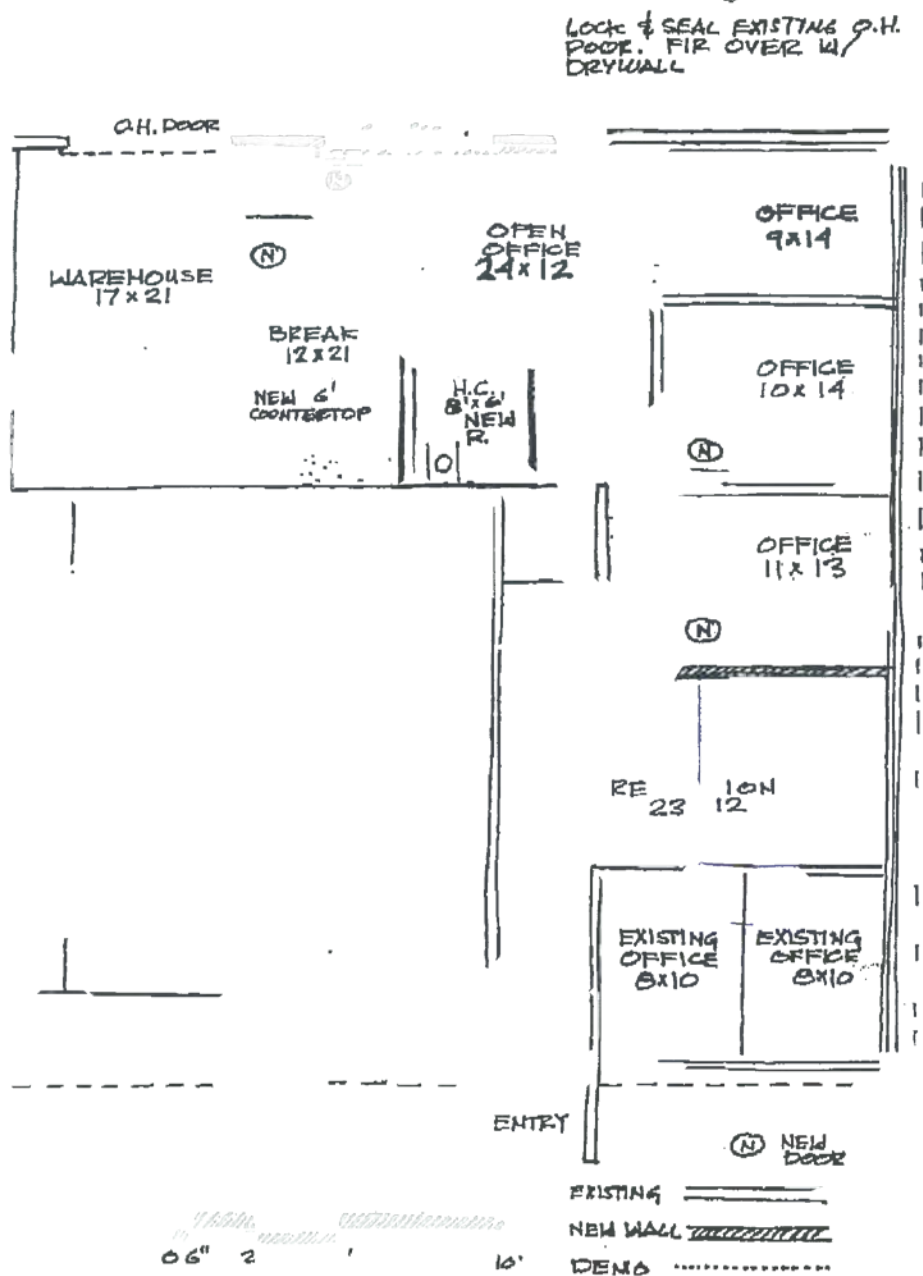
Locally owns, manages, and leases 41 buildings consisting of 1.8 million square feet of office and office-flex properties in 5 business parks. The Tampa West Portfolio includes Woodland Corporate Center and Northport, while the Tampa East Portfolio includes Legacy Park, Silo Bend, and Crosspointe I and II.



On-Site Deli

Our Space Works.

- One-story flex/office building
- Grade level loading capabilities
- Tenant pays own Electric and Janitorial
- Above average parking ratio 4-5/1,000



CAD must fit within this box

FOLLOW US ON



@workspacepropertytrust

VICE PRESIDENT, REGIONAL DIRECTOR

Jeff Lanning

O 813.889.3733

C 813.928.3142

j.lanning@workspaceproperty.com

4631 Woodland Corporate Blvd.

Suite 209

Tampa, FL 33614

www.workspaceproperty.com

LEASING
INFORMATION