

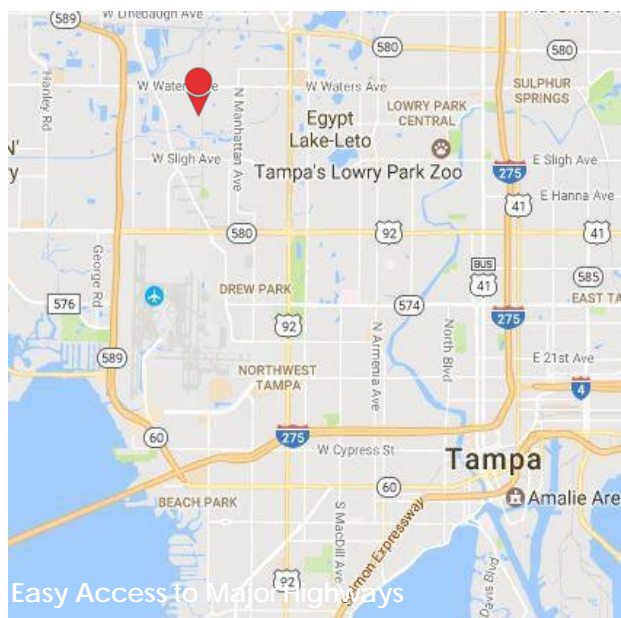


Find Your Space.

4505 Woodland Corp Blvd
Suite 100 Tampa, FL 33614

\$16.00/NNN | 8,224 SQ. FT.

5.75/1,000 Parking Ratio
Available for Lease



Easy Access to Major Highways



10 Minutes to Tampa International

Property Highlights



PARK AMENITIES

Property management office located on-site. Generous landscaping with mature trees and several ponds with ample shaded sidewalks throughout the park. Two delis located on campus. Close proximity to numerous hotels, restaurants, mall and retail shops.



TRANSPORTATION

Quick access to the Veterans Expressway, I-275 & Dale Mabry Highway. 10 minutes to Tampa Int'l Airport. HART stops in front of the business park.



TECHNOLOGY

Spectrum and Fiber Net.



SUSTAINABILITY

Recycling receptacles on-site.

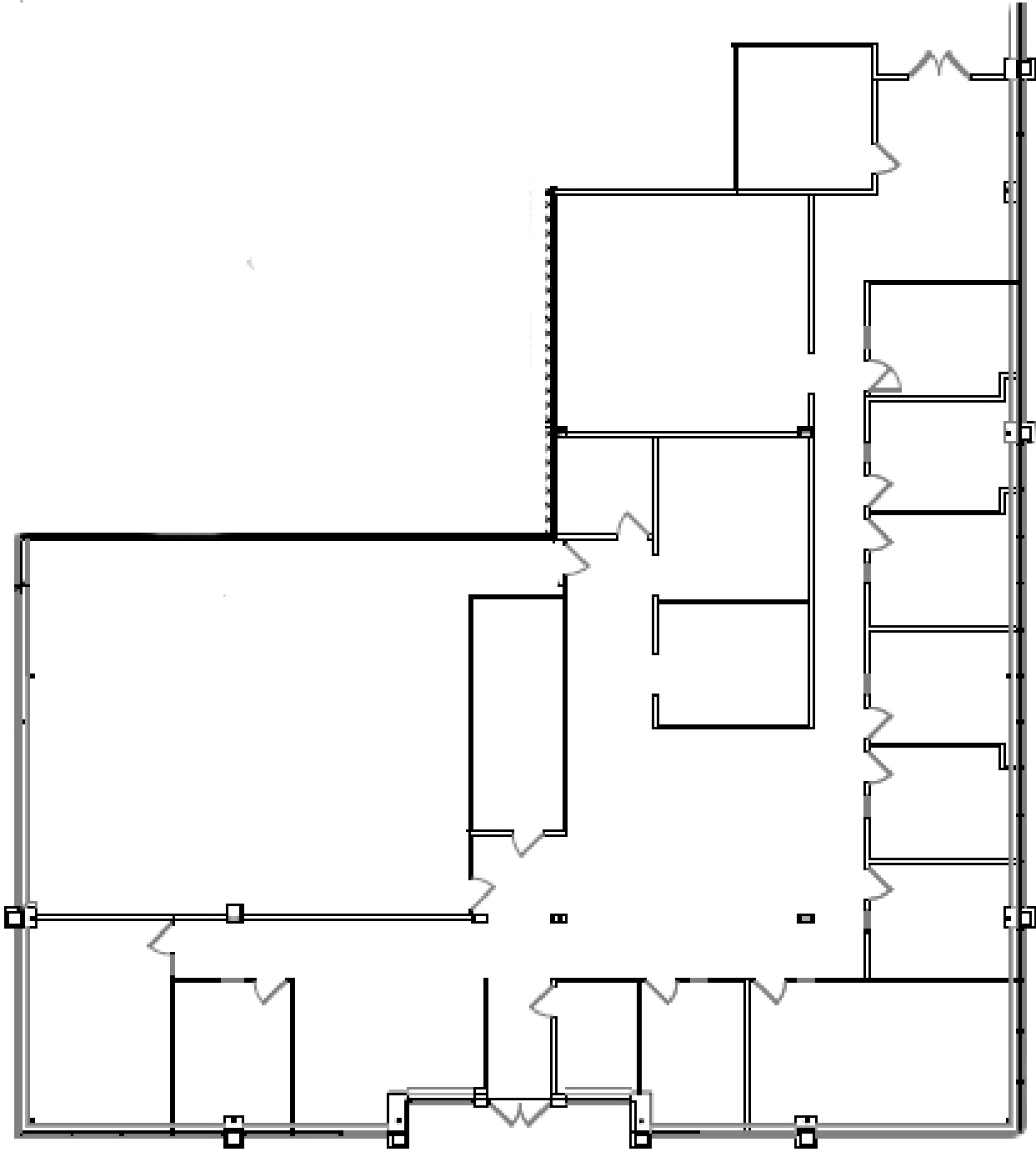


WORKSPACE PROPERTY TRUST (WSPT®)

Locally owns, manages, and leases 41 buildings consisting of 1.8 million square feet of office and light industrial properties in 5 business parks. The Tampa West Portfolio includes Woodland Corporate Center and Northport, while the Tampa East Portfolio includes Legacy Park, Silo Bend, and Crosspointe I and II.

Our Space Works.

Find Your Space.



workspace
property trust

- One -story office building
- Upscale open finish with extensive glass
- \$10.24/SF Estimated Operating Expenses

LEASING INFORMATION

4631 Woodland Corporate Blvd.
Suite 209
Tampa, FL 33614
www.workspaceproperty.com

VICE PRESIDENT, REGIONAL DIRECTOR
Jeff Lanning
O 813.889.3733
C813.928.3142
jlanning@workspaceproperty.com

FOLLOW US ON



[@workspacepropertytrust](https://www.workspacepropertytrust.com)