

# Find Your Space.

1500.1550 Liberty Ridge Drive  
Suite 140  
Wayne, PA 19087

11,745 SQ. FT.  
Available for Lease



Outdoor Patio



Fitness Center

## Property Highlights

### PARK AMENITIES



Park amenities include 9 miles of jogging trails, restaurants, hotels, a day-care facility, Wilson Township Park, access to Valley Forge National Park and shopping.



### SUSTAINABILITY

Workspace offers several sustainability initiatives including green janitorial cleaning and recycling. Electronics recycling and paper shredding events are held throughout the year on campus.



### TRANSPORTATION

Easy Access to the PA Turnpike, Routes 202, & 252. Public transportation includes SEPTA Route 124 with service to the King of Prussia Transportation Center and Philadelphia.



### TAXES

Located in the tax-friendly Tredyffrin Township and the Chester County Keystone Innovation Zone.



### TECHNOLOGY

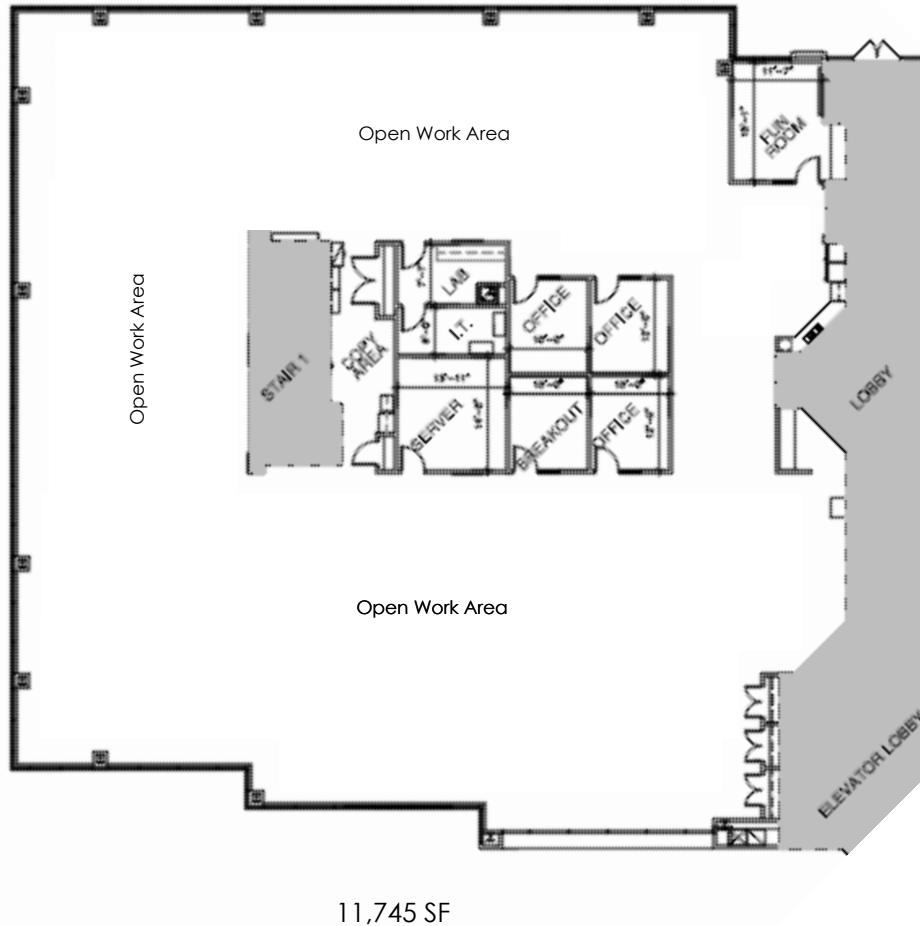
Comcast, Verizon & Century Link available throughout building.



### WORKSPACE PROPERTY TRUST (WSPT®)

Workspace Property Trust locally owns, manages and leases 30 buildings consisting of 2 million square feet of office and light industrial properties.

Our Space Works.



- Multiple outdoor patios with walking trails
- Free WiFi & portable cell phone chargers in lobby
- Spacious indoor collaboration area
- 24/7 Access to State-of-the-Art Fitness Center
- Electric car charging station located at 1200 & 1400 Liberty Ridge Drive
- Fooda located in lobby
- Executive level covered parking
- 9' ceiling height throughout
- Generous window line with three full sides of glass
- Grand 3-story lobby with breathtaking views of Valley Forge Mountain



Outdoor courtyard and walking path to 1200 & 1400 Liberty Ridge Drive

**LEASING  
INFORMATION**

5 Great Valley Parkway  
Suite 209  
Malvern, PA 19355  
[www.workspaceproperty.com](http://www.workspaceproperty.com)

DIRECTOR OF LEASING  
Catherine Bianco  
O 484.320.3705  
C 484.429.4899  
[cbianco@workspaceproperty.com](mailto:cbianco@workspaceproperty.com)

FOLLOW US ON



[@workspacepropertytrust](https://www.workspacepropertytrust.com)