

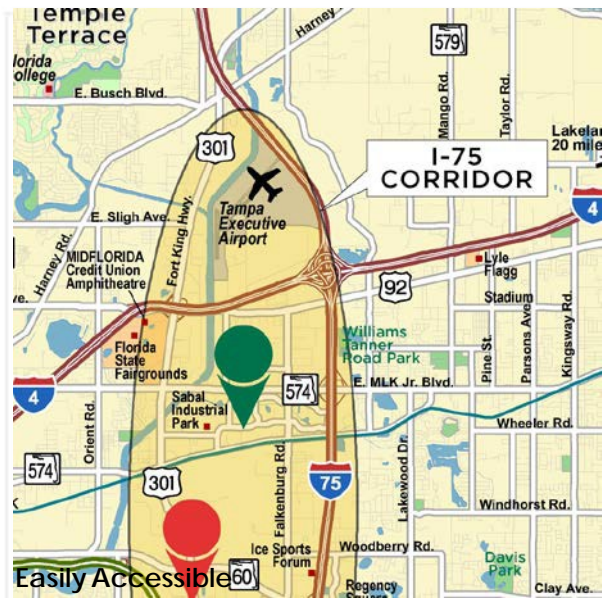


Find Your Space.

519 US HWY 301 S
Silo Bend Tampa, FL 33619

3,629 SQ. FT. | \$12.50/NNN

4.25/1,000 Parking Ratio
Available For Lease



Property Highlights



PARK AMENITIES

Class A business park. Generous landscaping with mature trees and ponds throughout the park. On-Site Deli and Close proximity to numerous hotels, restaurants, mall and retail shops. Property Management office provides rapid response 24-hours a day, 7 days a week.



TRANSPORTATION

Heart of the I-75 Corridor with quick access to US Hwy 301, S I-4 and Selmon Expressway.



TECHNOLOGY

Spectrum and Fiber Net.



SUSTAINABILITY

Recycling receptacles on-site.



WORKSPACE PROPERTY TRUST (WSPT®)

Locally owns, manages, and leases 41 buildings consisting of 1.8 million square feet of office and light industrial properties in 5 business parks. The Tampa West Portfolio includes Woodland Corporate Center and Northport, while the Tampa East Portfolio includes Legacy Park, Silo Bend, and Crosspointe I and II.

On-Site Deli

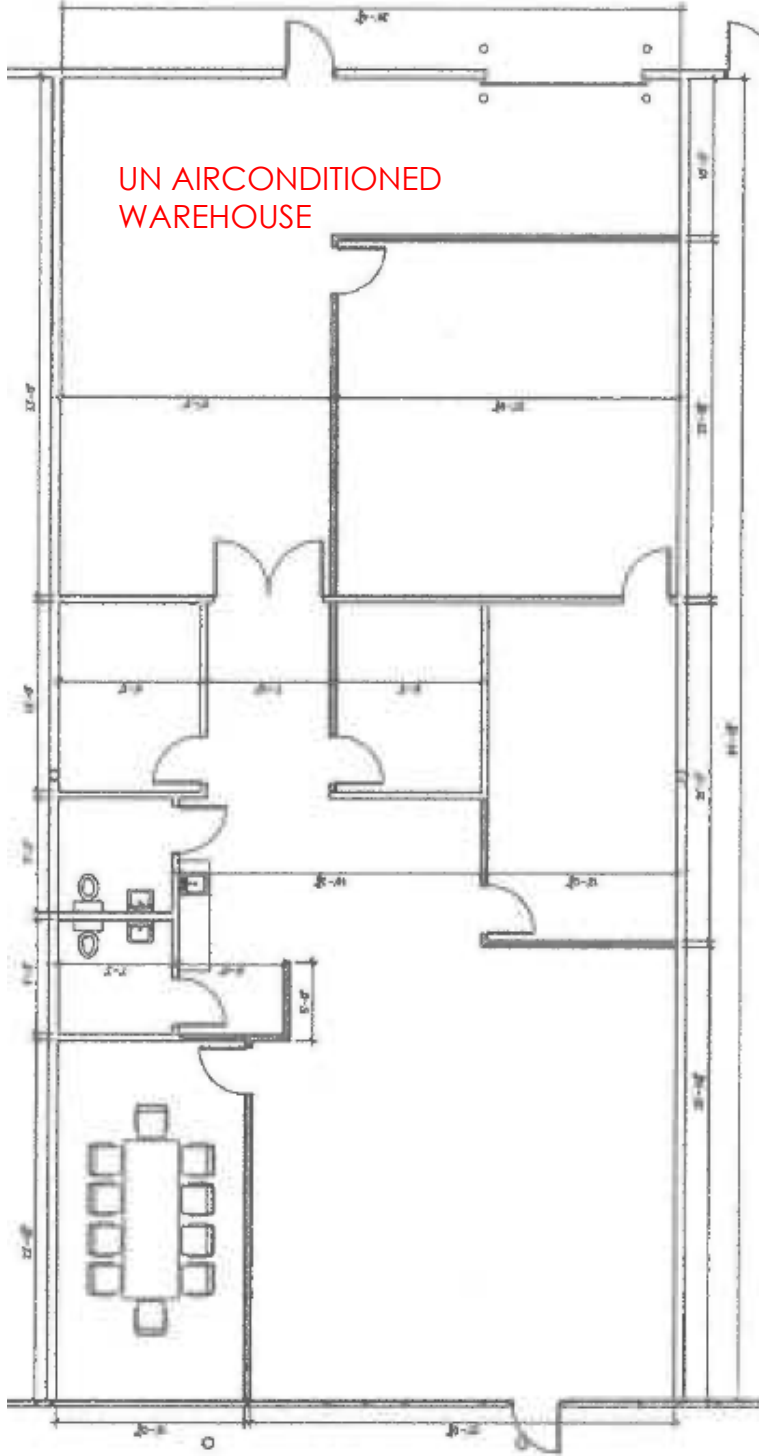


Our Space Works.

Find Your Space.

workspace
property trust

- Ample parking
- \$4.58 Estimated Operating Expenses
- Tenant pays own Electric and Janitorial



CAD must fit within this box

4631 Woodland Corporate Blvd.
Suite 209
Tampa, FL 33614
www.workspaceproperty.com

VICE PRESIDENT, REGIONAL DIRECTOR
Jeff Lanning
O 813.889.3733
C 813.928.3142
jlanning@workspaceproperty.com

FOLLOW US ON



@workspacepropertytrust

LEASING
INFORMATION