

# Find Your Space.

5 Great Valley Parkway  
Suite 200  
Malvern, PA 19355

6,257 SQ. FT.  
Available for Lease



Comfortable Lobby



Summer Volleyball League

## Property Highlights



### PARK AMENITIES

Park amenities include jogging trails with access to the Chester Valley Trail, restaurants, hotels, daycare facilities, ball fields, tennis courts, sand volleyball courts and Valley Creek Township Park.



### SUSTAINABILITY

Workspace offers several sustainability initiatives including green janitorial cleaning and recycling.



### TRANSPORTATION

Easy Access to the PA Turnpike, Routes 202, 29, 30 & 401. Public transportation includes SEPTA Route 206 with connection to the Paoli Train Station for the Paoli/Thorndale Regional Line & Amtrak.



### TAXES

Located in the tax-friendly East Whiteland Township and the Chester County Keystone Innovation Zone.



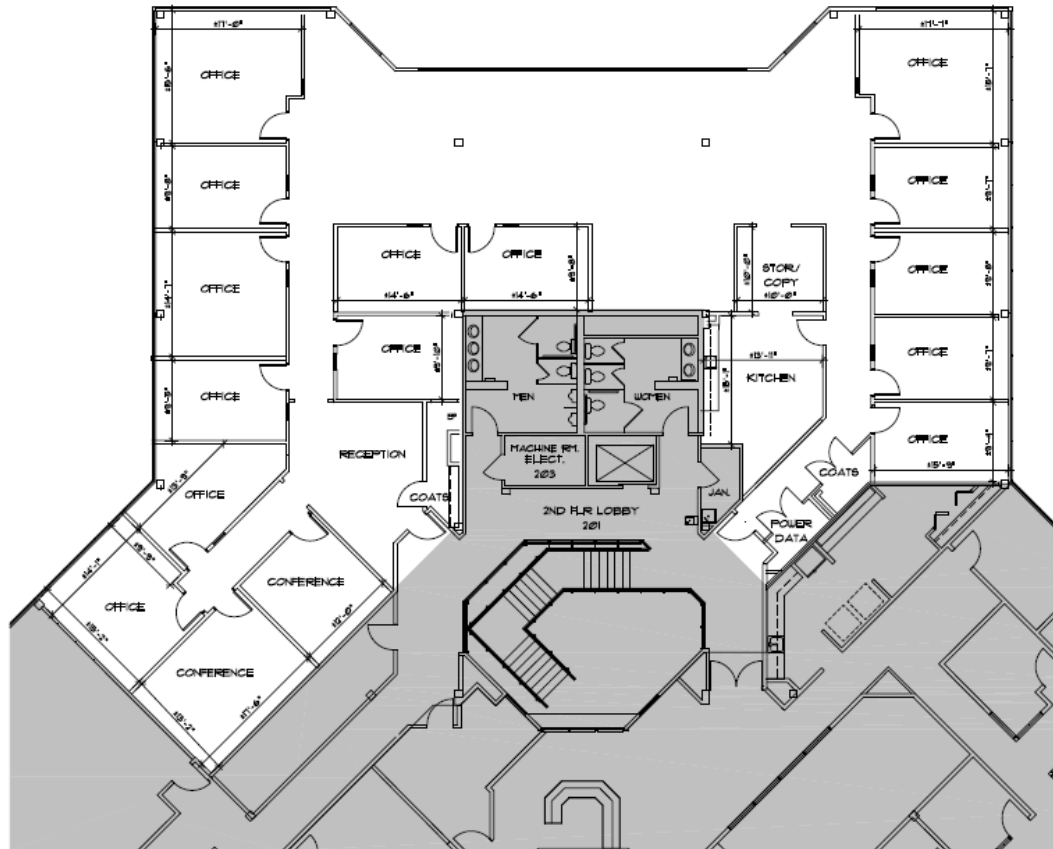
### TECHNOLOGY

Comcast, Verizon & TelAmenity available at building.



**WORKSPACE PROPERTY TRUST (WSPT®)** Workspace Property Trust locally owns, manages and leases 30 buildings consisting of 2 million square feet of office and light industrial properties.

Our Space Works.



- Ample parking
- Free WiFi and portable cell phone chargers located in the lobby
- Fresh Vending located in adjacent building
- Walkable to Valley Creek Township Park and Restaurants along South Atwater Drive
- Electric car charging stations installed in parking area

**LEASING  
INFORMATION**

5 Great Valley Parkway  
Suite 209  
Malvern, PA 19355  
[www.workspaceproperty.com](http://www.workspaceproperty.com)

DIRECTOR OF LEASING  
Catherine Bianco  
O 484.320.3705  
C 484.429.4899  
[cbianco@workspaceproperty.com](mailto:cbianco@workspaceproperty.com)

FOLLOW US ON



@workspacepropertytrust