

Find Your Space.

5 Great Valley Parkway

Suite 356
Malvern, PA 19355

4,466 SQ. FT.
Available for Lease



Comfortable Lobby



Summer Volleyball League

Property Highlights

PARK AMENITIES



Park amenities include jogging trails with access to the Chester Valley Trail, restaurants, hotels, daycare facilities, ball fields, tennis courts, sand volleyball courts and Valley Creek Township Park.

SUSTAINABILITY



Workspace offers several sustainability initiatives including green janitorial cleaning and recycling. Electronics recycling and paper shredding events are held throughout the year on campus.

TRANSPORTATION



Easy Access to the PA Turnpike, Routes 202, 29, 30 & 401. Public transportation includes SEPTA Route 206 with connection to the Paoli Train Station for the Paoli/Thorndale Regional Line & Amtrak.

TAXES



Located in the tax-friendly East Whiteland Township and the Chester County Keystone Innovation Zone.

TECHNOLOGY



Comcast, Verizon & TelAmenity available at building.

WORKSPACE PROPERTY TRUST (WSPT®)



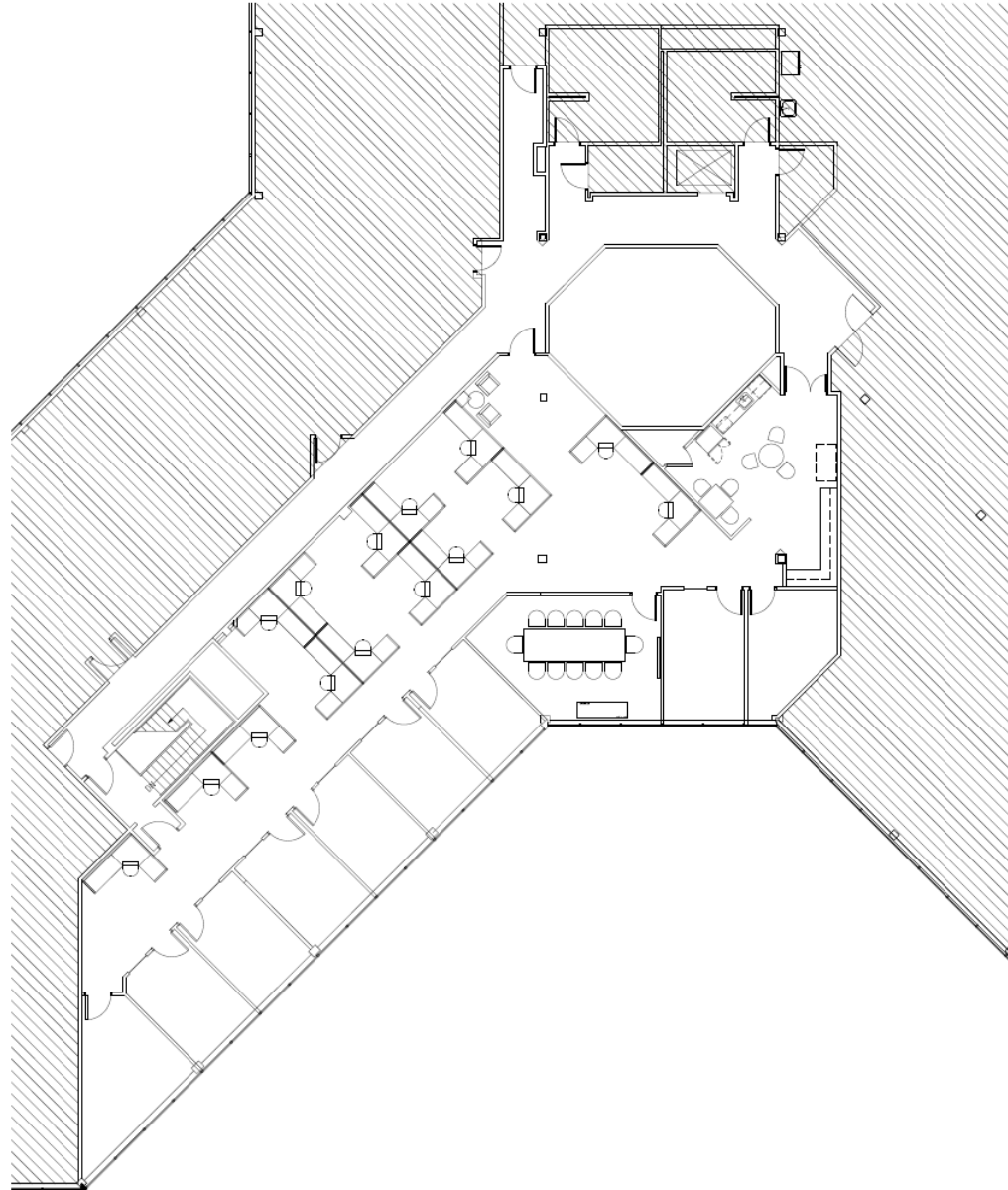
Workspace Property Trust locally owns, manages and leases 30 buildings consisting of 2 million square feet of office and light industrial properties.

Our Space Works.

- Plug and play opportunity
- Generous window line & prominent entrance off 3rd floor elevator lobby
- Free WiFi and portable cell phone chargers located in the lobby
- Fresh Vending located in adjacent building
- Walkable to Valley Creek Township Park and Restaurants along South Atwater Drive



Electric Car Charging on site



**LEASING
INFORMATION**

5 Great Valley Parkway
Suite 209
Malvern, PA 19355
www.workspaceproperty.com

DIRECTOR OF LEASING
Catherine Bianco
O 484.320.3705
C 484.429.4899
cbianco@workspaceproperty.com

FOLLOW US ON



[@workspacepropertytrust](https://www.workspaceproperty.com)